

WEST YORKSHIRE SPINNERS

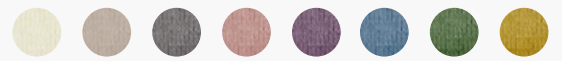


^{Bo}peep
pure

Sunflower

Botanical Garden Colourwork Blanket
KAL part eight
Designed by Rosee Woodland

Skill Level: ●●●○○



Measurements

Size

One size

Blanket

85cm wide x 83cm tall after blocking

Panels

20cm wide x 19.5cm tall after blocking

Edging

2.5cm wide

Yarn – blanket panels



West Yorkshire Spinners Bo Peep Pure DK
Rosemary (381)
1 x 50g hank



West Yorkshire Spinners Bo Peep Pure DK
Blush (287)
1 x 50g hank



West Yorkshire Spinners Bo Peep Pure DK
Natural (010)
1 x 50g hank



West Yorkshire Spinners Bo Peep Pure DK
River (194)
1 x 50g hank



West Yorkshire Spinners Bo Peep Pure DK
Blackcurrant (319)
1 x 50g hank



West Yorkshire Spinners Bo Peep Pure DK
Sand (208)
1 x 50g hank



West Yorkshire Spinners Bo Peep Pure DK
Dandelion (446)
1 x 50g hank



West Yorkshire Spinners Bo Peep Pure DK
Mist (166)
1 x 50g hank

Yarn – blanket edging



West Yorkshire Spinners Bo Peep Pure DK
Sand (208)
1 x 50g hank

Materials

- Pair of 4mm (UK8/US6) knitting needles, for panels
- 3.25mm (UK10/US3) circular knitting needle, 120cm or 150cm long for edging
- Eight hinged stitch markers for edging
- One contrast colour stitch marker for edging
- Optional – one metre of cotton jersey and matching polyester sewing thread for backing

Stranded colourwork tension

26 sts and 26 rows to 10cm measured over stranded colourwork using 4mm needles before blocking

24 sts and 24 rows to 10cm measured over stranded colourwork using 4mm needles after blocking

Strandtarsia colourwork tension

26 sts and 27 rows to 10cm measured over strandtarsia colourwork using 4mm needles before blocking

24 sts and 24.5 rows to 10cm measured over strandtarsia colourwork using 4mm needles after blocking

Note: This pattern uses almost all the yarn specified. Treat the first panel in each technique as your tension swatch. Working to the tension given is very important otherwise more yarn will be needed.

Blocking is essential for this pattern.

Abbreviations

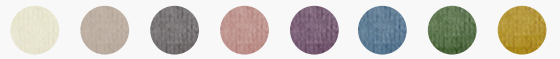
alt	alternate
cont	continue
fol	following
inc	increase
K	knit
Kfb	knit into the front and back of the st. 1 st increased
P	purl
Pfb	purl into the front and back of the st. 1 st increased
pm	place marker
rep	repeat
RS	right side
sm	slip marker
st(s)	stitch(es)
WS	wrong side

100% FALKLAND ISLANDS WOOL

DK	4mm US6	4mm USG6
Tension 10cm/4"sq	112 122	50g
	Metres Yards	Hank
28 rows 22sts		
Reshape whilst damp		

HAND WASH ONLY

100% WOOL/WOLLE/LANA/LAINE/YLLE/VILLA



Resources

To help you with your Botanical Garden colourwork blanket, we've added some helpful video tutorials, covering the techniques you'll need, to our YouTube channel.

Click on the links below or search 'West Yorkshire Spinners' on YouTube to view:

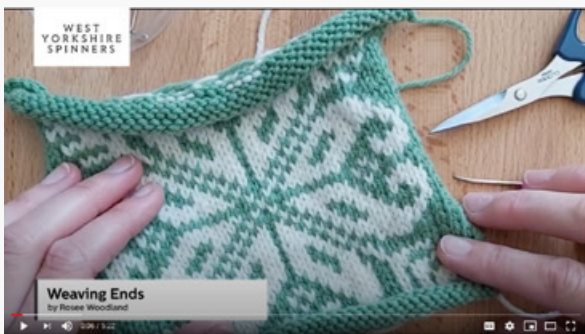
Stranded Colourwork



Strandtarsia



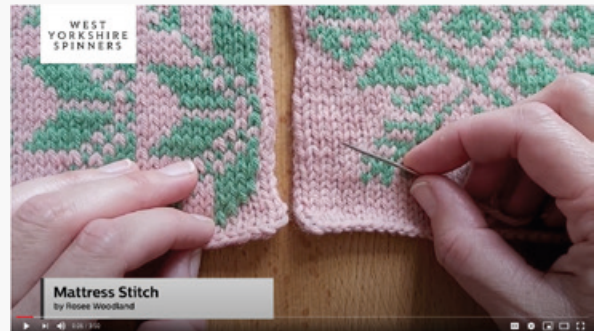
Weaving In Ends



Blocking



Mattress Stitch

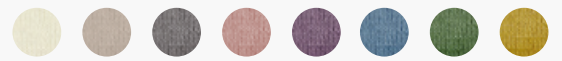


False Grafting



Edges and Borders





Blanket panel

Using 4mm needles cast on 47 sts using the colour shown on the chart for Row 1 of your panel.

Note: If using the long tail cast on, count your cast-on row as Row 1 of the chart and start working on WS of work from Row 2.

Row 1 (RS): Knit to end, following colours shown on Row 1 of chart from right to left and using the colourwork method given for your panel (see below).

Row 2 (WS): Purl to end, following colours shown on Row 2 of chart from left to right using the colourwork method given for your panel (see below).

These 2 rows set pattern.

Cont in pattern as set, working each row of chart once until you have completed Row 47.

Cast off evenly to match the tension of the cast-on edge.

Weave in ends and block panel to measurements given.



Stranded colourwork technique panels (eight in total)

Make one of each in colourway A and colourway B.

- Allotment (week 1, part 1)
- Lavender (week 2, part 3)
- Verbena (week 3, part 5)
- Meadow (week 4, part 7)

When working using the stranded colourwork technique, strand the colour not in use across the wrong side of the work, taking care not to pull too tight or leave too loose.

Twist the colours together at the beginning of every row.

Always strand consistently, stranding the main colour yarn when not in use above the contrast colour yarn. This helps the contrast colour patterning stand out very slightly against the background.

Strandtarsia colourwork technique panels (eight in total)

Make 1 of each in colourway A and colourway B.

- Potager (week 1, part 2)
- Cornflower (week 2, part 4)
- Maze (week 3, part 6)
- Sunflower (week 4, part 8)

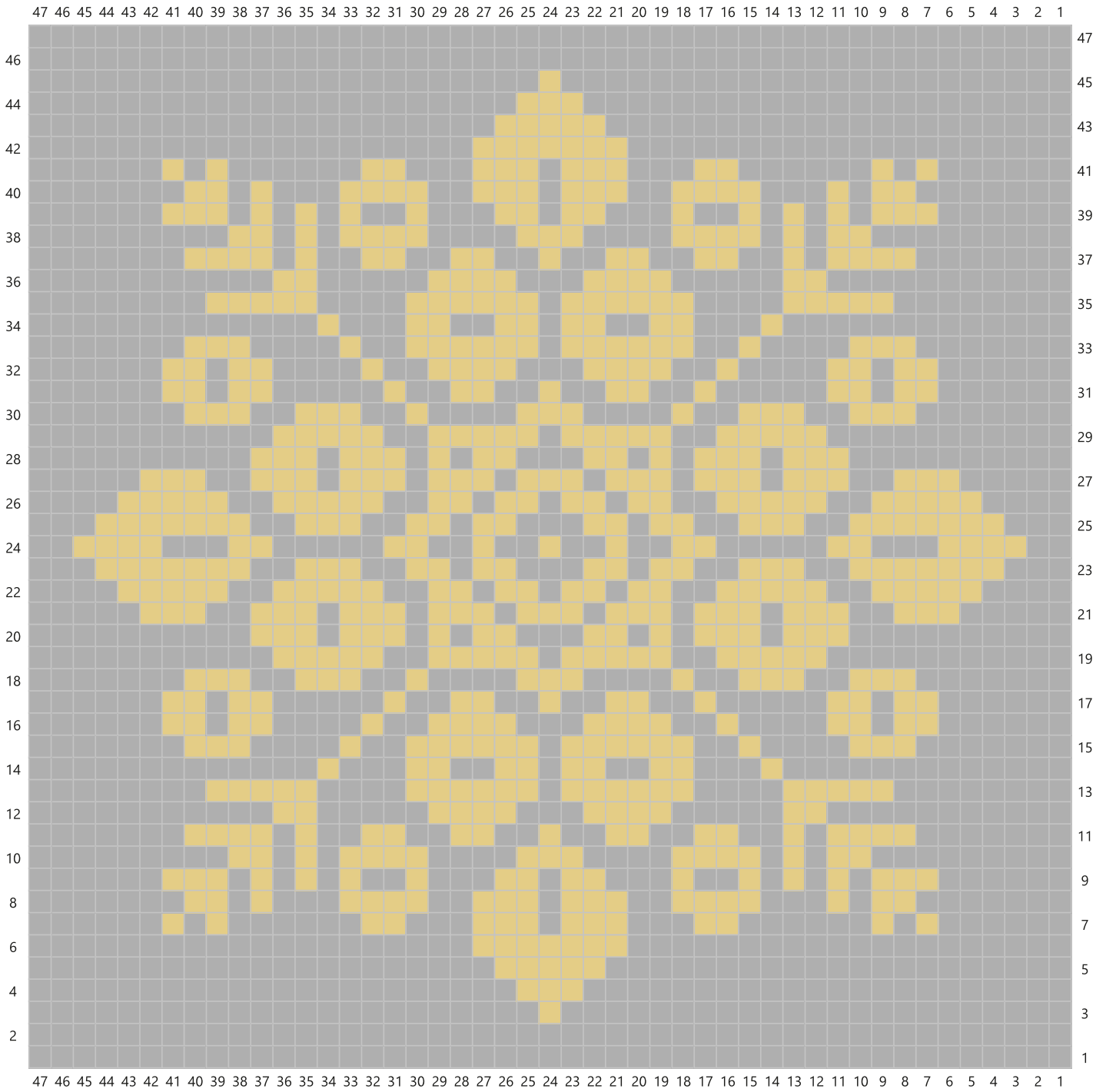
When working using the strandtarsia colourwork technique, work the edges around the central motif using the main colour yarn only. Work the central motif using the colour shown on the chart, stranding the colour not in use across the wrong side of the work, taking care not to pull too tight or leave too loose.

Do not twist the colours together where they meet, but instead, at the end of each row, ‘anchor’ the contrast colour yarn two sts away from where it will first be used on the next row (the outer edge of the central motif) by twisting it together with the main colour yarn at this point. This will allow you to strand it across the two sts to the first point it is used on the following row, keeping your tension consistent.

Always strand consistently, stranding the main colour yarn when not in use above the contrast colour yarn. This helps the contrast colour patterning stand out very slightly against the background.



Sunflower – chart A

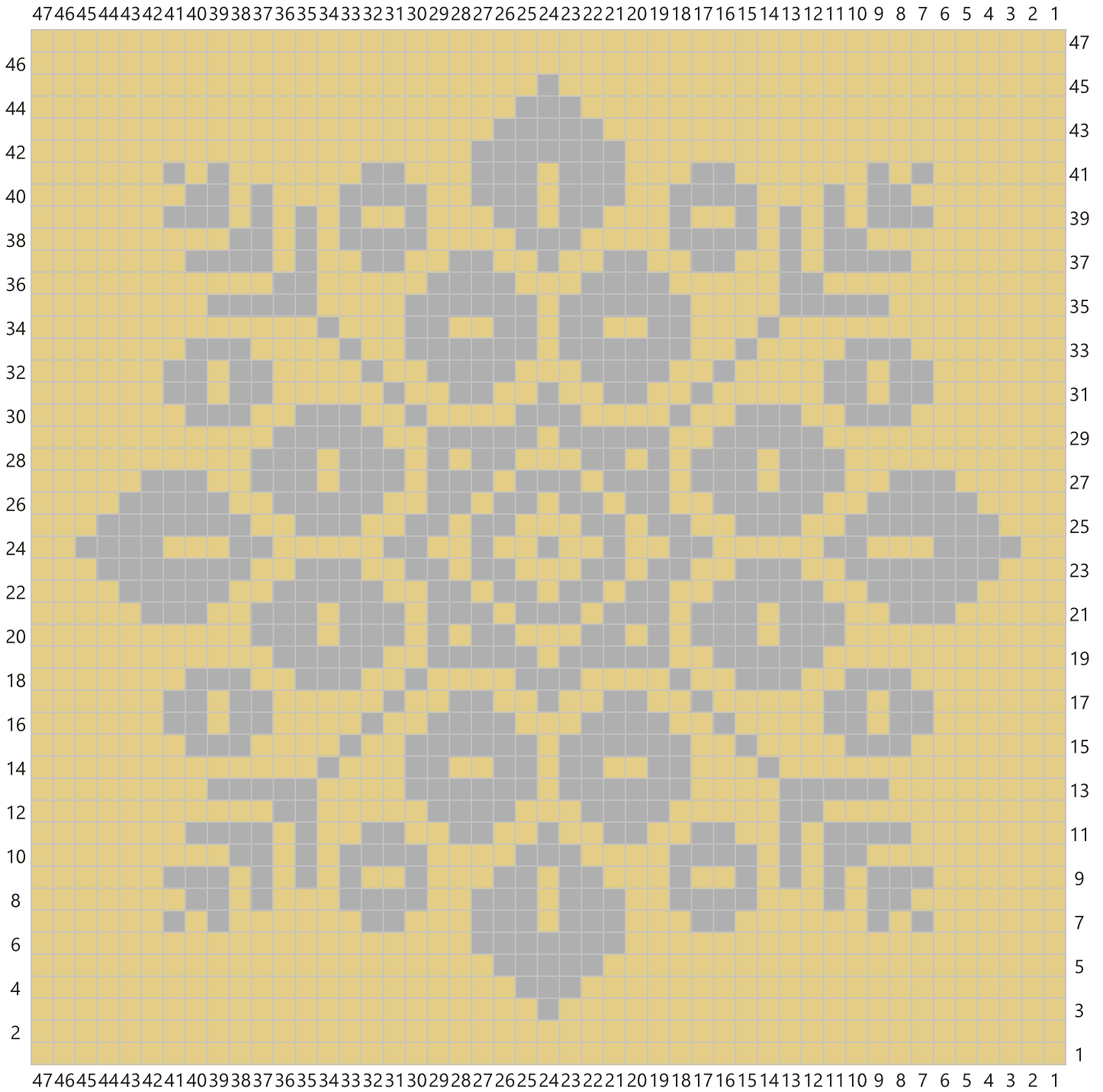


Key

-  Mist (166)
-  Dandelion (446)
-  RS: Knit
-  WS: Purl



Sunflower – chart B



- Key**
- Mist (166)
 - Dandelion (446)
 - RS: Knit
WS: Purl

WEST YORKSHIRE SPINNERS

Follow Us



Join our Facebook community



UNIT 2 AIREDALE PARK, ROYD INGS AVENUE, KEIGHLEY, WEST YORKSHIRE BD21 4DG

(0)1535 664500 SALES@WYSPINNERS.COM WYSPINNERS.COM